

FMC HyperLink Connectivity Card With LVDS

The FMC-950 and FMC-951 are FPGA Mezzanine Cards (FMC) providing both HyperLink and Low Voltage Differential Signaling (LVDS) connectivity designed with controlled impedance PCB traces. The FMC-950/FMC-951 are designed to provide connectivity between HyperLink enabled Texas Instruments DSP EVM boards and FPGA based development platforms with FMC connections. HyperLink consists of both low speed single ended signals and high speed differential signals. The low speed sideband control signals consist of 4 sets of unidirectional LVCMOS clock and data pairs used for power management and protocol flow control. The low voltage regulators and level shifters safely adapt the LVCMOS to the varying FPGA I/O voltage standards. The high speed pairs are PCML-compatible clock data- recovery SERDES pins .

The FMC-950/FMC-951 also supports two LVDS Analog Front End (AFE) input connectors which are routed to the FMC mezzanine connector. The AFE connector signals consist of 9 pairs of source synchronous DDR LVDS data and a sample clock. The FMC-950/FMC-951 AFE connections are specifically designed to adapt the physical electrical connections of up to two of the Texas Instruments AFE EVM's such as the AFE5808EVM Ultrasound AFE board. AFE support is dependent on the FPGA carrier board's I/O resources and is not guaranteed for all platforms.

Contact Integre to determine which FMC Connectivity Card is best suited for your hardware platform.

SPECIFICATIONS

I/O :

- 1 HyperLink Interface – iPass+ HD Connector
SERDES Interface, 4 Lane Full Duplex (3.125 Gbps/lane, 12.5 total)
- Sideband Station Management Interface – LVCMOS 4 Pair I/O
- 2 Analog Front End Interfaces
9 Pair each source synchronous DDR LVDS data and clock
- 1 FMC VITA 57.1 Compliant, High Pin Count Connector

On board high performance, low-jitter 156.25 MHz LVDS oscillator

Dimensions: 63mm x 84 mm Single FMC

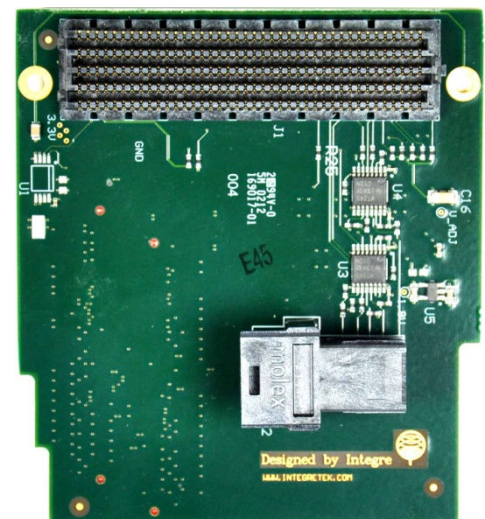
Temperature: 0° C (32° F) to 55° C (131° F). Air-Cooled

Compliance: This product is RoHS compliant.

Warranty: This product has a one year warranty

Optional Products:

- 950-LB-PLUG - HyperLink Loopback Plug



What's Included

- One (1) HyperLink Connectivity Card
- FMC-950 or FMC-951
- One (1) HyperLink 0.5M Cable
- Four (4) Mounting Screws
- Two (2) Standoffs
- Hardware Manual

All trademarks are property of their respective owners.